

# A CALENDAR OF LIGHT

## Audience Score

The chorus will always sing your part before you echo it,  
and the chorus will continue singing with you.

If you don't read music, read the lyrics and follow your neighbors.

You may sing your part in any octave.

You may choose to listen, but you're invited to sing.

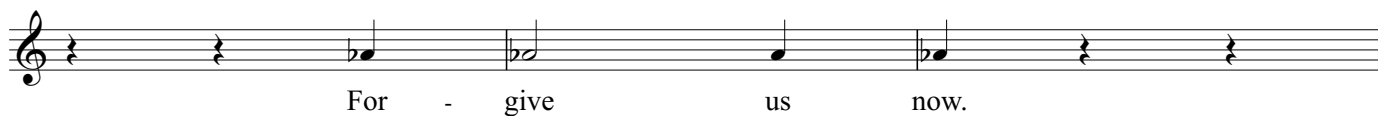
### Let us believe in the resurrection of the earth.

1. When the chorus sings, "Let us believe" followed by a rest, you echo:

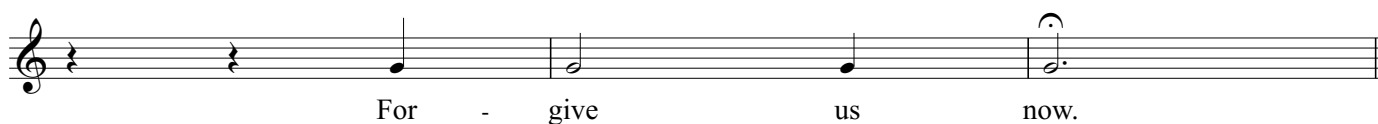


*You'll sing this phrase 6 times total, with choral interludes in between.*

2. When the chorus sings "Forgive us now" followed by a rest (first time), you echo:



3. When the chorus sings "Forgive us now" followed by a rest (second time), you echo:



## Is it impossible to plant change?

You'll hear the chorus sing through the music below (both phrases) 2 times before you enter.  
The left half of the audience enters first, followed by the right half:

Musical score for the phrase "Is it impossible to plant change?". The score is written for two staves, labeled "Right audience" and "Left audience". Both staves are in 4/4 time. The "Right audience" staff begins with a rest, followed by a triplet of eighth notes (G4, A4, B4), then a triplet of eighth notes (B4, A4, G4), then a quarter note (F#4), an eighth note (E4), and a quarter note (D4). The "Left audience" staff begins with a triplet of eighth notes (G4, A4, B4), then a triplet of eighth notes (B4, A4, G4), then a quarter note (F#4), an eighth note (E4), and a quarter note (D4). Both staves end with a double bar line and a repeat sign. The lyrics "Is it im-pos-si - ble\_\_ to plant change?" are written below the staves. The number "8x" is written above the end of the "Right audience" staff.

*Repeat your phrase 8 times, then stop. The chorus will finish the piece without the audience.*

## How can we let it all slip through our fingers?

You'll hear the chorus sing through the music below (both phrases) 1 time before you enter:

Musical score for the phrase "How can we let it all slip through our fingers?". The score is written for two staves, labeled "Right audience" and "Left audience". Both staves are in 4/4 time. The "Right audience" staff begins with a rest, followed by a quarter note (B3), an eighth note (A3), a quarter note (G3), an eighth note (F#3), a quarter note (E3), an eighth note (D3), and a quarter note (C3). The "Left audience" staff begins with a quarter note (B3), an eighth note (A3), a quarter note (G3), an eighth note (F#3), a quarter note (E3), an eighth note (D3), and a quarter note (C3). Both staves end with a double bar line and a repeat sign. The lyrics "How can we\_ let it all slip through our fin-gers?" are written below the staves. The number "6x" is written above the end of the "Right audience" staff.

*Repeat your phrase 6 times, then stop. The chorus will finish the piece without the audience.*

## Winter will return

You'll hear the chorus sing this phrase 2 times before you enter. You may quietly hum or sing "oo":

Musical score for the phrase "Winter will return". The score is written for a single staff. It begins with a quarter note (B3), followed by a half note (A3), and then a double bar line with a repeat sign. The lyrics "[mm or oo]" are written below the staff. The number "22x" is written above the end of the staff.

*Repeat for the entire movement.*

# The light gives up too early

You'll hear a soloist sing "The light gives up too early. We light candles in the coming dark."  
The chorus repeats the entire phrase once, then you enter:

**Audience**



The light gives up too ear - ly. We light can - dles in the com - ing

**Right audience** Repeat 4 times.



dark. The light gives up too ear - ly.

**Left audience** Repeat 4 times.



dark. The light gives up too ear - ly. We light can - dles in the

**4x**



We light can - dles in the com - ing dark. The light gives up too

*After the 4th repeat, wait for the right audience to finish their phrase before joining in.*

**4x**



com - ing dark. The light gives up too

**Whole audience**



ear - ly. We light can - dles in the com - ing dark.

**rit.**

